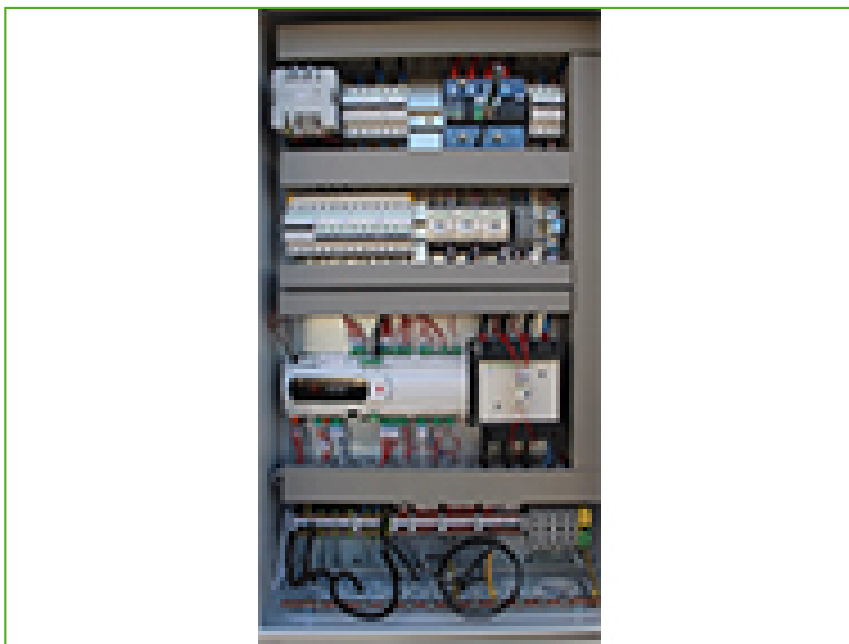


Closed circuit cooling towers

Options and accessories

Electrical panel heater



The default iPilot[®] electrical panel is equipped to be installed in ambient temperatures that go down to -10°C.

For climates where the ambient temperature can become even lower, an electrical heater can prevent damage to the internal components inside the electrical panel for ambient temperatures as low as -40°C.

Want to install a Nexus[®] in a climate with ambient temperatures as low as -40°C? Contact your [local BAC representative](#).